

FERGUSON CENTER CONCERT HALL INFORMATION

Address

Ferguson Center for the Arts
Christopher Newport University
1 University Place
Newport News, VA 23606-2998

Web Address

www.fergusoncenter.org

Telephone Numbers

Administrative Offices

757.594.7448

757.594.7006 (fax)

DIRECTIONS

Ferguson Center for the Arts is located on the campus of Christopher Newport University in Newport News, Virginia. (**Exit 258A via I-64**) **ONTO J Clyde Morris Blvd** stay straight on this road for about several miles you will cross **Jefferson Ave** (large car dealership on right) stay straight.

Continue past Riverside Medical complex on your left **stay straight across Warwick Blvd** (large road) at this intersection there is a huge bronze propeller to your left and a large statue on your right you can see the center at your 1 o'clock.

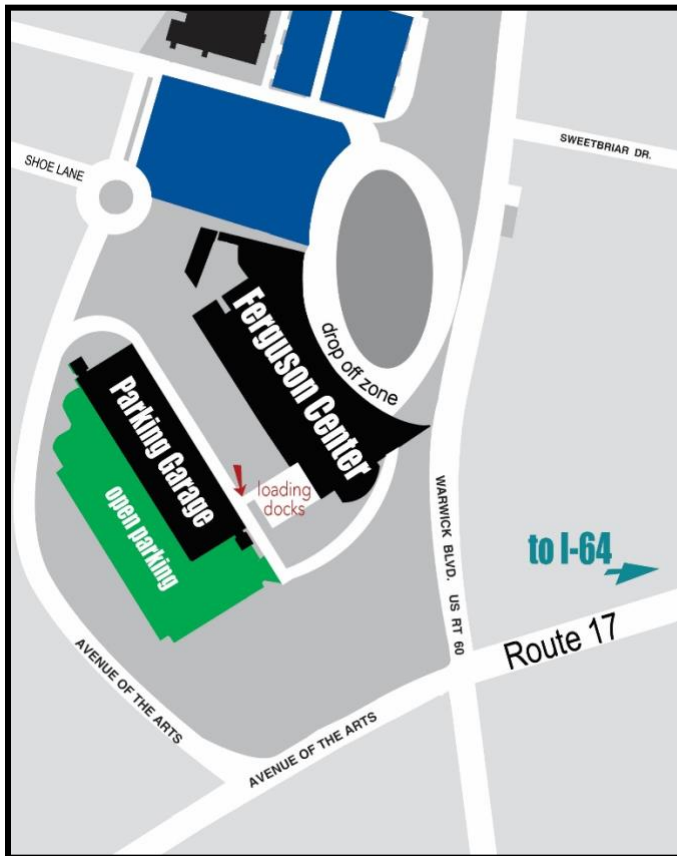
After crossing Warwick get in your right lane as you round the curve you will see a parking deck **on your right**.

Take the driveway on your immediate right

If you get to the circle you have passed the entrance!

Follow road around to the right just past the first entrance of the parking deck
Immediately on your left (80' brick fly-loft) is the entrance to the rear of the Theater. **There are 2 truck loading bays with stairs to the left of them - this is the stage entrance - Park here**

Map coordinates: 37.061628, -76.489892



SEATING

Orchestra Pit (Not available if pit orchestra)	37
Orchestra (Less 18 for FOH mix position)	729
Parterre	225
Grand Tier	215
Dress Circle	415
Orchestra Loge	24
Grand Tier Boxes	32
Dress Circle Boxes	32
Total Capacity	1,709

CARPENTRY

Load-In Area

The dock is located on stage level, in the upstage left corner of the stage (It is a short push from the dock to the stage). There are three dock doors (trailers can stay parked here for show run). All doors in the dock are 10'-0" wide x 11' 6" high roll up doors. Two doors are equipped with levelers; the third is a straight dock with a dock plate. The dock area is a 20' x 30' rectangular space that can be accessed by the upstage left door, or via the crossover hallway from stage right.

Stage Dimensions

Proscenium	29' high x 39'6" – 55'6" wide (Adjustable)
Stage Dimensions	40'-6" deep x 98' wide (smoke pocket to US wall)
Unobstructed Stage Width	98'
Wing Space (Adjustable)	SL: 18'-6"; SR 26'-6"
Apron	3'-10" x 59'
Orchestra Pit	9'-4" deep x 51' 6" wide
Stage Height from Auditorium	3'-6"

Stage Rigging

Type	Single Purchase counter weight
Line Sets:	53 (Available) on 6" centers
Grid Height	68' (Channel Grid)
High Trim	65'-6"
Low Trim	4'-0"
Fly/Locking Rail Stage Right @ Stage Level	
Pin Mid-Rails SR & SL	32'3" High Off Stage level
Battens Length	63'-0"
Arbor Capacity	1,716lbs
Available Weight	50,000lbs

Stage Floor

Hard maple tongue and groove with matte dark stain. Subfloor ¾" plywood with 2 x 4 sleepers (16" oc) on resilient pads. Lagging and screwing permitted in deck – must be predrilled.

Soft Goods

Type	Color	Description/Fullness	Size
House Curtain	Green	Guillotine/Travel 150%	30'X62'
Legs	Black Velour	5 Pair – Flat	30'X15'
Borders	Black Velour	5 – Flat	10'X63'
Mid-Stage Traveler	Black Velour	Flat – Traveler	30'X64
Up-Stage	Black Velour	Flat –Ties On	30'X64'
Scrim	Black	Sharks tooth – Flat	29'X62'
Scrim	White	Sharks tooth – Flat	29'X62'
Cyclorama	White	Filled Leno – Flat	29'X62'

STAGE EQUIPMENT

- (1) Custom orchestral shell
- (1) Steinway 9' Concert Grand
- (1) JLG 20DL Axxessor self-powered personnel lift
- (1) JLG 41AM (out-riggers must be used at all times) personnel lift
- (100) Musicians chairs, stands and lights
- (24) 4' X 8' Stage Right risers - varying heights from 8" - 32"
- (4) 4' X 4' Stage Right risers - varying heights from 8" - 32"

AUDIO

The front of house sound mix position (8' x 12') is in the orchestra level located in the center section (row T,U, and V seats 101-106). Audio cables can be run along the perimeter of hall from backstage (about 150' run). Isolated sound power is 200 amps, three-phase, five-wire and is located up stage right with cams and raw wire lugs. There are also three (3) 400 amp three-phase five-wire services located stage left.

WIRELESS MICROPHONE RECEIVERS

Rack mounted with wireless workbench on integrated computer

4 channels Shure Axient

8 channels Shure -ULXD

Handhelds and belt packs available for all

Capsule inventory includes 4 DPA D:facto II - as well as SM58 and SM87

Over ear mics 4 DPA D:fine 88 dual ear

Microphone inventory and availability can be discussed during the advance

MIXERS

Main Production Mixing Consoles

- **Solid State Logic L200** with 64 channel in and 32 out stage racks
- **Avid Digi Design Profile** 48 Channel Venue Mix Rack equipped with Venue 4 software and Pro Tools 10
- **Yamaha CL5** with 64 channel 32 outputs - we have file conversion software for Yamaha show files

FOH Rack for Venue Mix Rack

2 Summit 50 tube levelers

Rupert Neve 5045 Primary Source Enhancer

TC D-one delay

TC M –one multi effects

TC – 2000 Multi effects

Yamaha 990

LOUDSPEAKERS

Left/Right RCF – TTL31-A active line array (10) boxes per side 15 degree by 100 degree

Left/Right RCF – TTS56-A self-powered 2 X 21 sub woofers – 1 per side

Left/Right RCF – TT118 self-powered 2 X 18 sub woofers – 1 per side

Bottom of array is at 17' We can strip boxes to give room for ground stacks when needed

Left/Right Fill speakers EAW – JF100

Apron Fill Loudspeakers EAW JF80 (4)

DSP FOR LINE ARRAY

Lake LM-26 and LM44 for Speaker Management with wireless tablet is located backstage but is controlled from tablet

MONITORS

RCF – TT45 – SMA 1500 watt 2x12" (14)

PRODUCTION INTERCOM SYSTEM

4 Channel Main Station Rack Clear-Com MS-440 (1) Backstage paging from rack stage left
Single Channel Belt Packs Clear-Com RS-501

VIDEO EQUIPMENT

House Video Cameras are Vadio PTZ they are switched from a seamless dual scaler from Analog Way

There is a dedicated PC and Mac 1 DVD and 2 OPPO Blu-ray

(2) Panasonic PT-RQ13K 13,000lm 3DP Laser projectors with 4K Resolution from FOH balcony rail **CANNOT BE MOVED**

Screen **CANNOT BE MOVED** located on Battens #16 - 18 front projection 30' x 15' (2:1 aspect ratio) hung from batten.

ELECTRICAL

Power

- (3) – 400amp, 3 Phase – Jump USL (Winch)
- (1) – 200 amp, 3 Phase Isolated – Ground USR
- (1) – 100 amp 3 Phase, USR Grid
- (1) – 100 amp Shore Power USL Truck Dock

Dimmers

379 – Strand 2.4Kw Dimmers

- 288 Usable 2.4K Dimmers
- 35 Orchestra Shell 2.4K Dimmers
- 56 House Light 2.4K Dimmers

Control Board

Avolites Pearl Expert w/ touch wing
 Programmable DMX control system
 ETC Ion 1000 w/ 1X20 fader wing

Control Nodes

Six SN110 Portable Nodes programmed for DMX output Channels 1-512 on two independent universes controlled 520i over Ethernet. One SN100 Video Node available.

Circuits

1-3	Trap Room	85-90	#2 Box Boom HR
4-6	Orchestra Pit	91-96	#1 Box Boom HL
7-12	DSL Floor Pocket	97-102	#2 Box Boom HR
13-24	USL Floor Pocket	103-108	#2 Box Boom HL
25-36	USR Floor Pocket	109-120	2 nd Balcony Rail
37-42	DSR Floor Pocket	121-132	Stage Right Gallery
43-48	Proscenium Boom HR	133-144	FOH Catwalk # 1
49-54	Proscenium Boom HL	145-174	FOH Catwalk # 2
55-60	#2 Box Boom HR	175-198	FOH Catwalk # 3
61-66	#1 Box Boom HL	199-288	Grid Iron
67-72	#1 Box Boom HR	289-308	Stage Left Gallery (Shell Dimmers)
73-78	#2 Box Boom HL	309-319	FOH Catwalk # 4 (HOUSE USE ONLY)
79-84	1 st Balcony Rail	320-324	Forestage Catwalk (Shell Dimmers)
		325-379	House Lights

Front-of House Positions

	Height (from Stage)	Distance (from plaster line)
▪ #1 Proscenium Box HR & HL	9'	4'
▪ #2 Proscenium Box HR & HL	22'	4'
▪ Catwalk # 1 (Mostly obstructed)	42'	21'
▪ Catwalk # 2 (Edges obstructed)	46'	36'
▪ Catwalk # 3	48'	51'
▪ Catwalk # 4 (Dedicated House Use)	50'	66'
▪ 1 st Balcony	17'	77'
▪ 2 nd Balcony	30'	79'

House Lighting Instrument Inventory Conventional

- ETC Source 4 - (40) 10 degree 750 watts
- ETC Source 4 - (50) 19 degree 750 watts
- ETC Source 4 - (50) 26 degree 750 watts
- ETC Source 4 - (50) 36 degree 750 watts
- ETC Source 4 - (64) Par 750 Watts
- Strand – (10) 8” Fresnel 2k
- Follow Spots - (4) Lycian #1290 XLT 2000 Watts (Spot Booth)

Intelligent Lighting (by prior arrangement)

- ETC Source 4 – (4) LED series 2 Lustr 26 degree
- ETC Source 4 – (4) LED series 2 Lustr 36 degree
- Philips Color Kinetics – (12) Colorblaze 72
- Blizzard - Quadra ToughPar LED fixtures (60)
- Clay Paky - A.leda B-EYE K10 (12)

Hardware

- 12” Sidearms
- 24” Sidearms
- Ellipsoidal Top Hats
- Par Top Hats
- 8” Barndoors
- Drop In Iris
- Template Holders For Size A, B & Glass
- Donuts
- 50lb Boom Bases (8)
- 80’ – 12” X 18” Applied truss
- 40’ – 20.5” X 24” Applied truss

Cable Inventory

12/3 SJOOW With 20 amp, 3-Pin Stage Connectors

- 5’-0”
- 10’-0”
- 25’-0”
- 50’-0”
- 100’-0”
- Twofers

6 Circuit Multi-cables

- 10’-0”
- 25’-0”
- 50’-0”
- 75’-0”
- 100’-0”

6 Circuit Fanouts

- 10’-0”

PRODUCTION SUPPORT SPACES

Dressing Rooms

- (1) – 1-2 Person Star Dressing Room (Fully Equipped)
- (2) – 4 Person Principal Dressing Rooms (Fully Equipped)
- (4) – 12 Person Chorus Dressing Rooms (Sinks Only) (Can seat additional)
- (2) – Fully equipped restrooms near Chorus Dressing Rooms (3 showers each)

Wardrobe and Laundry Area

- Room Size 24' x 32'
- (1) Fully equipped restroom
- (3) Washers and Dryers
- (2) Irons
- (3) Steamers

Production Rooms

- (1) – Visiting Production Office 10' x 12' USL Near Loading Dock
- Additional rooms available for special use (i.e. day school classes)

Green Room

- Performers Lounge Off Stage Left 12' x 27'

CREW INFORMATION

The Ferguson Center for the Arts is a non-union house with experienced part-time and student crews. However, large productions utilize stagehands from local labor providers – Hampton Roads Stage and Rigging or Craftwork Sound. Ferguson Center technical staff must be present at all times when facility is in use.

FERGUSON CENTER CONCERT HALL LINESET SCHEDULE

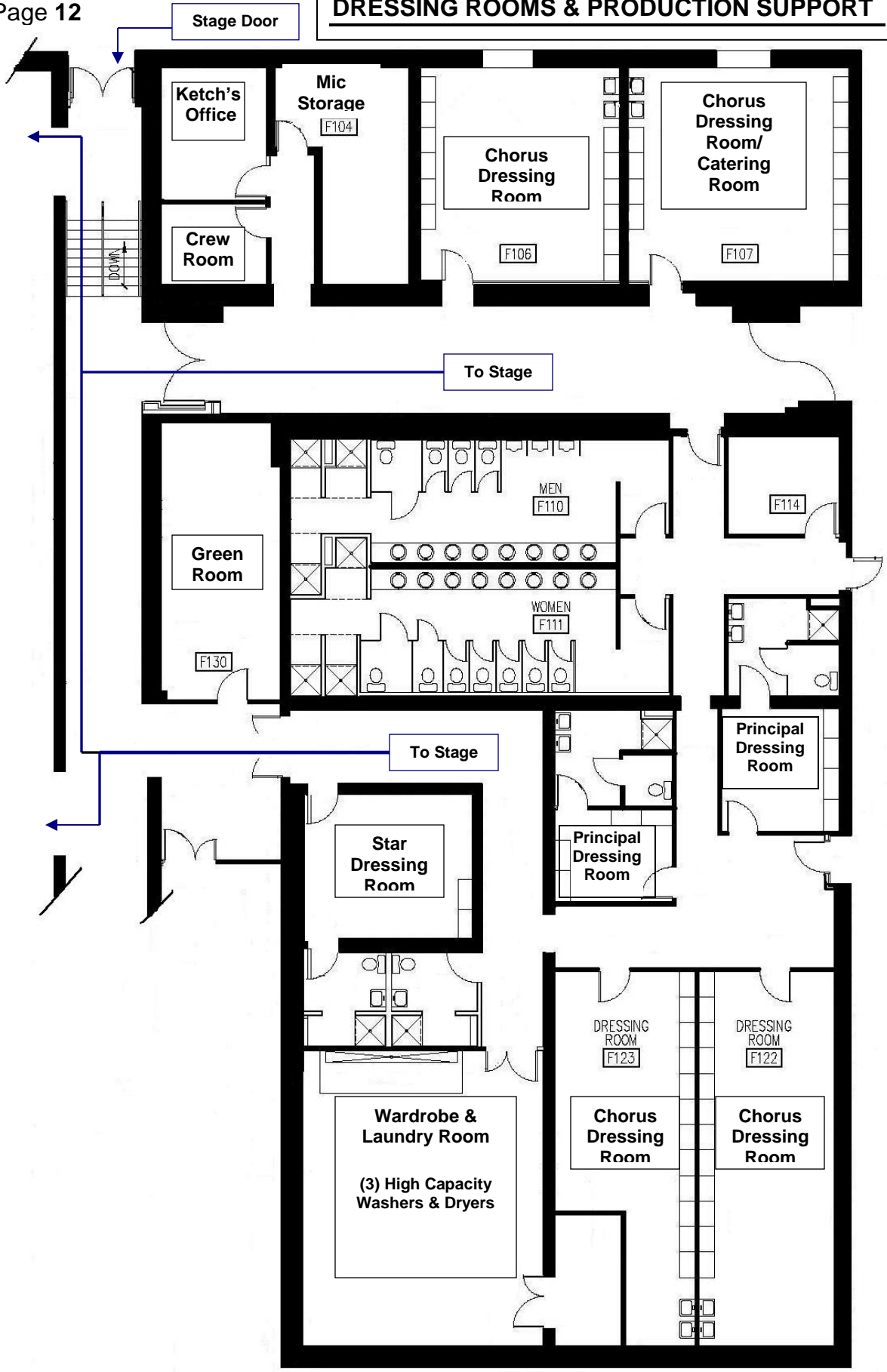
Lineset #	Distance	Use	Notes
1	1'	House Curtain	All distances are from the plaster line
2	1'-6"	Available	
3	2'	Available	BORDER #1
4	2'-6"	Available	LEGS #1
5	3'	Available	
6	3'-6"	Available	12 quadra pars
7	4'	Available	
8	4'-6"	Available	
9	5'	Available	SCREEN BORDER
10	5'-6"	Available	SCREEN LEGS
11	6'	Not Available	DOES NOT EXIST
12	6'-6"	Not Available	Orchestra Shell - Can Not Be Moved
13	7'	Not Available	DOES NOT EXIST
14	7'-6"	Available	
15	8'	Available	
16	8'-6"	Not Available	NOT FOR USE (SCREENFACE)
17	9'	Not Available	HOUSE 30'X15' HD SCREEN (DOES NOT MOVE)
18	9'-6"	Not Available	NOT FOR USE (SCREEN TENSION RIGGING)
19	10'	Available	BLACKOUT DROP
20	10'-6"	Available	
21	11'	Available	
22	11'-6"	Available	
23	12'	Available	BORDER #2
24	12'-6"	Available	LEGS #2
25	13'	Not Available	DOES NOT EXIST
26	13'-6"	Available	12 quadra pars + 6 B-eyes
27	14'	Available	
28	14'-6"	Available	
29	15'	Not Available	DOES NOT EXIST
30	15'-6"	Available	
31	16'	Available	
32	16'-6"	Available	
33	17'	Available	
34	17'-6"	Available	
35	18'	Not Available	DOES NOT EXIST
36	18'-6"	Not Available	Orchestra Shell - Can Not Be Moved
37	19'	Not Available	DOES NOT EXIST
38	19'-6"	Not Available	DOES NOT EXIST
39	20'	Available	BLACK OUT DROP
40	20'-6"	Available	
41	21'	Available	

Lineset #	Distance	Use	Notes
42	21'-6"	Available	
43	22'	Available	BORDER # 3
44	22'-6"	Available	LEGS #3
45	23'	Available	
46	23'-6"	Available	12 quadra pars
47	24'	Available	
48	24'-6"	Available	
49	25'	Not Available	DOES NOT EXIST
50	25'-6"	Available	
51	26'	Not Available	DOES NOT EXIST
52	26'-6"	Available	
53	27'	Available	
54	27'-6"	Available	
55	28'	Available	
56	28'-6"	Available	
57	29'	Not Available	DOES NOT EXIST
58	29'-6"	Available	
59	30'	Not Available	DOES NOT EXIST
60	30'-6"	Not Available	Orchestra Shell - Can Not Be Moved
61	31'	Not Available	DOES NOT EXIST
62	31'-6"	Available	
63	32'	Available	BORDER # 4
64	32'-6"	Available	LEGS # 4
65	33'	Available	
66	33'-6"	Available	
67	34'	Available	
68	34'-6"	Available	BLACK SCRIM
69	35'	Available	
70	35'-6"	Available	CYC ELEC
71	36'	Available	
72	36'-6"	Available	
73	37'	Available	
74	37'-6"	Available	CYC BORDER
75	38'	Available	CYC LEGS
76	N/A	SR Tab	
77	N/A	SL Tab	
78	39'-6"	Available	WHITE CYCLORAMA
79	40'	Available	BLACK OUT DROP

* 61 Available Line Sets not including House Curtain or SR / SL Tabs

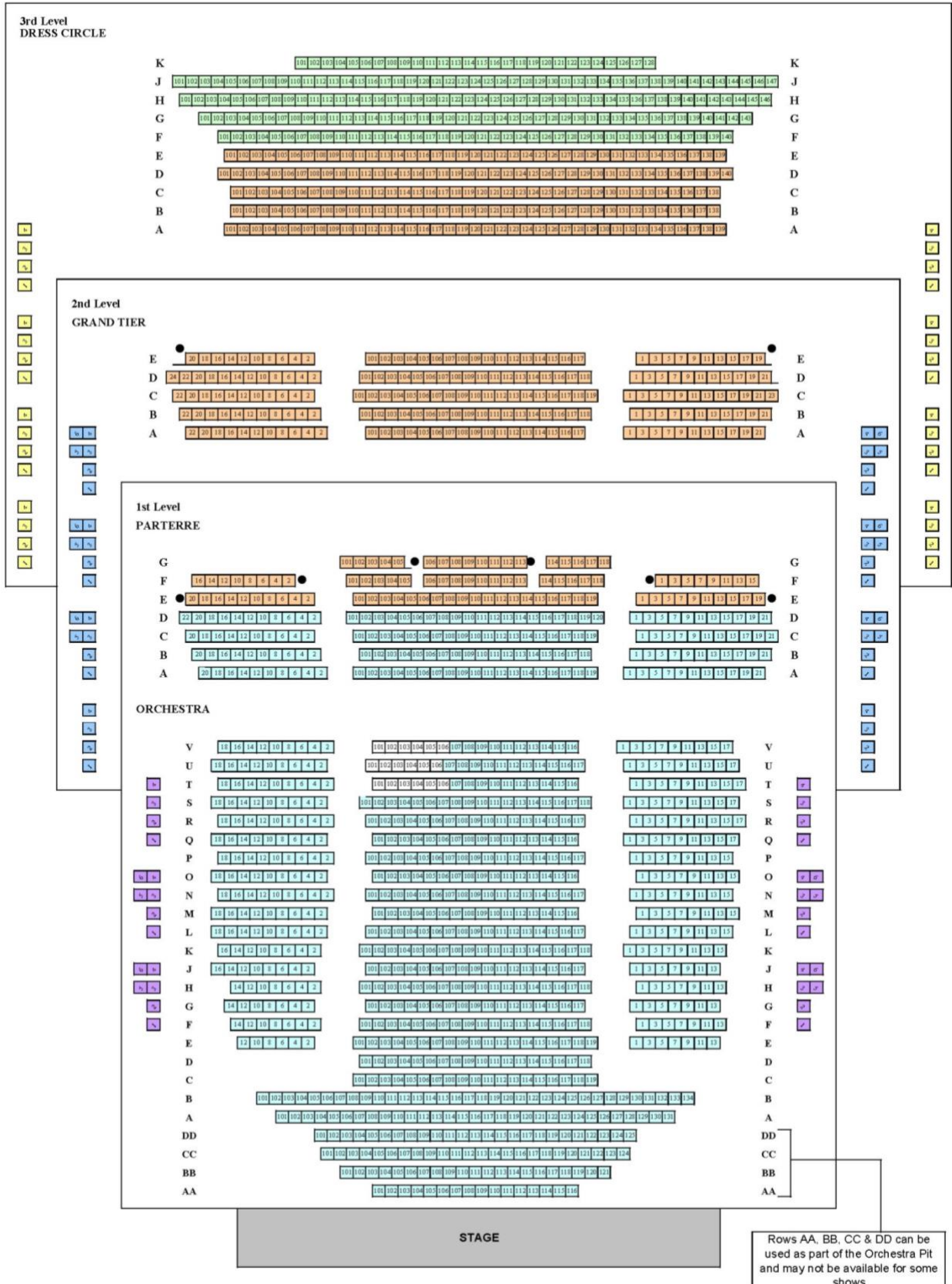
* Electrics are not permanently fixed

DRESSING ROOMS & PRODUCTION SUPPORT



Ferguson Center for the Arts

Concert Hall - Seating Chart



- Pricing Zone 1
- Pricing Zone 2
- Pricing Zone 3
- Orchestra Box Seats
- Grand Tier Box Seats
- Dress Circle Box Seats
- May not be available for some performances